



6433 SHARON HILLS ROAD

CHARLOTTE, NC 28210 • MLS# 3916793



WWW.GRANDFATHERHOMES.COM

980.219.7480 • INFO@GRANDFATHERHOMES.COM • [@GRANDFATHERHOMES](https://www.instagram.com/GRANDFATHERHOMES)

LUXURY DESIGN

- Traditional-meets-modern floor plan redesigned by Grandfather Homes
- Interior design by Tammy Coulter Design: stain and paint colors, tile, lighting, hard-surface counters, unique fixtures and accessories
- Sealed crawlspace with dehumidifier
- 30-year architectural shingle roof
- Guest house above the garage features living room, bedroom, and full bathroom
- Designated AV closet
- House audio pre-wire with Klipsch in-ceiling speaker pairs in four locations
- Cat6 wiring at all TV locations
- UniFi access points pre-wire for whole-home WiFi



GOURMET KITCHEN

- Thermador appliance package
- Custom cabinetry with soft close doors and drawers
- Custom plaster range hood crafted by local artisan
- Cabinet to ceiling backsplash
- Scullery with full secondary appliances
- Separate walk-in pantry

PRIMARY RETREAT

- Primary bedroom with vaulted shiplap ceiling
- Breathtaking primary bathroom with vaulted ceiling and skylights. Wet room with soaking tub and 3-fixture shower (includes two rainheads).
- Spacious walk-in closet

EXCEPTIONAL OUTDOOR LIVING

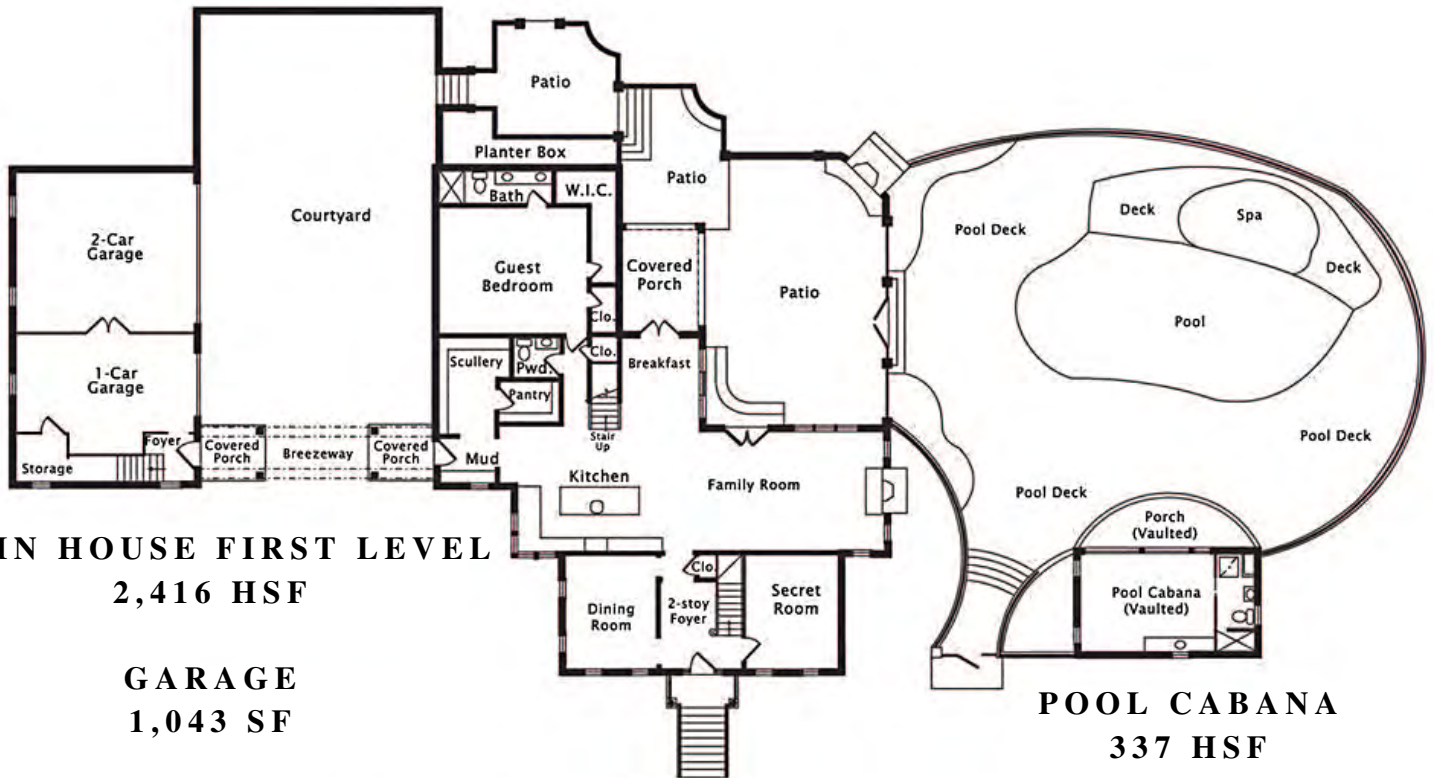
- Incredibly quiet, 1.54 acre homesite
- Privacy from mature landscaping on all four sides designed by landscape architect, Ted Cleary
- Stately auto court with bluestone detailing
- Custom metal double entry doors
- Courtyard leads to 3-car garage with storage
- Expansive brick patios and built-in flower boxes
- Spill-over spa with unique poolscape
- Pool cabana with wet bar, full bathroom, and laundry
- Wood burning outdoor fireplace
- Covered terrace off of the breakfast area



Elevations and renderings are artists' conceptions. Grandfather Homes reserves the right to make changes which are substantially equivalent to the above list. Features subject to change without notice.

6433 SHARON HILLS ROAD

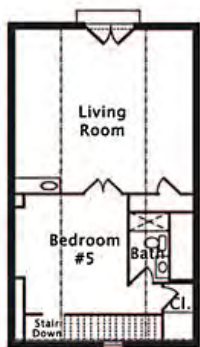
5 BEDROOMS | 5.1 BATHROOMS • TOTAL PROPERTY 5,951 HSF



MAIN HOUSE FIRST LEVEL
2,416 HSF

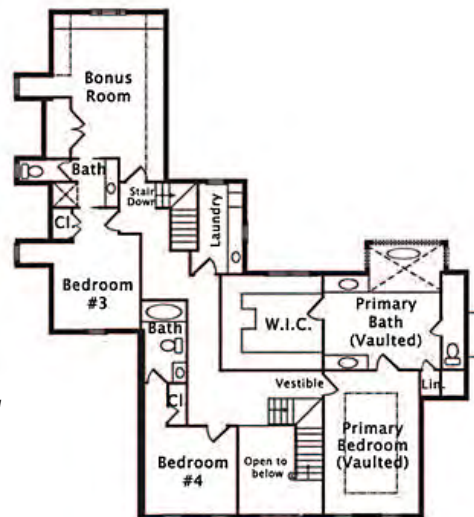
GARAGE
1,043 SF

POOL CABANA
337 HSF



MAIN HOUSE SECOND LEVEL
2,155 HSF

GUEST HOUSE
1,043 HSF







CONCEPTUAL SITE PLAN



LANDSCAPING PLAN IS SUBJECT TO CHANGE. CONSULT WORKING DRAWINGS FOR ACTUAL DIMENSIONS AND INFORMATION. ELEVATIONS ARE ARTISTS' CONCEPTIONS.



ABOUT US

Grandfather Homes is a Charlotte-based home builder offering premiere custom homes. Our greatest assets are our exemplary level of craftsmanship, our unwavering dedication to building your perfect home, and the depth of experience that our employees bring to each project. We pride ourselves on integrity, close attention to detail, and honesty at each step of the process. We take the time to understand what you envision in your perfect home – and then we will bring your dreams to life.

980.219.7480
@GRANDFATHERHOMES
INFO@GRANDFATHERHOMES.COM
WWW.GRANDFATHERHOMES.COM