



# 4530 MONTCLAIR AVENUE

CHARLOTTE, NC 28211 • MLS #3832430

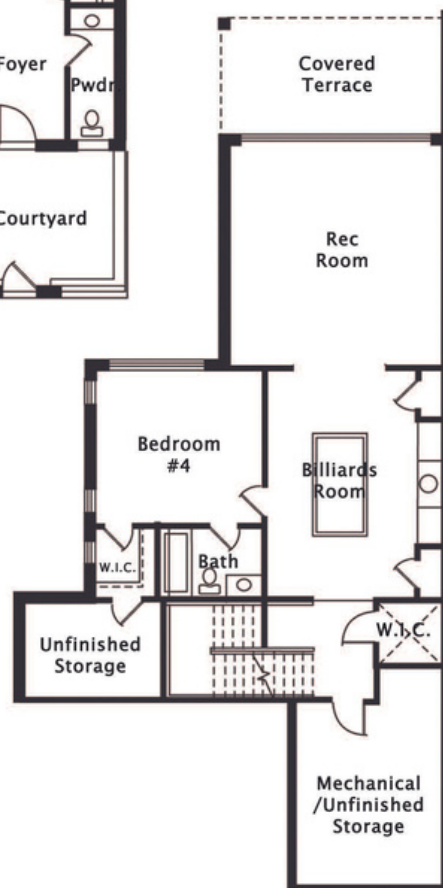
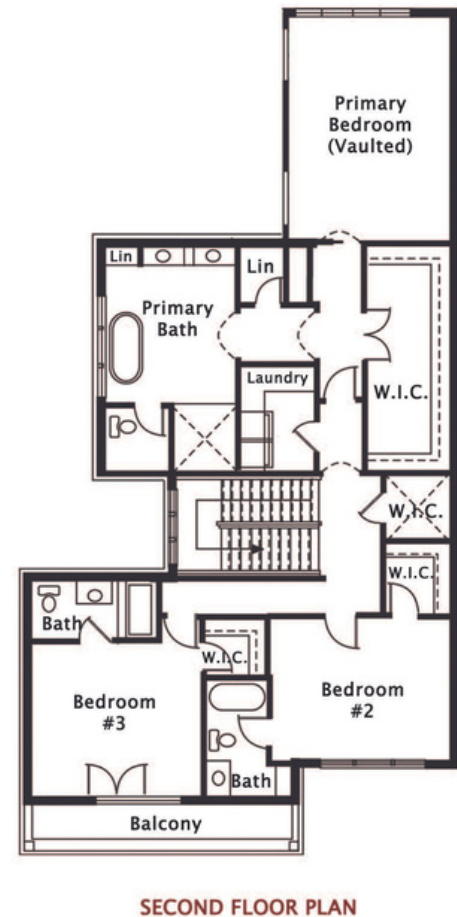
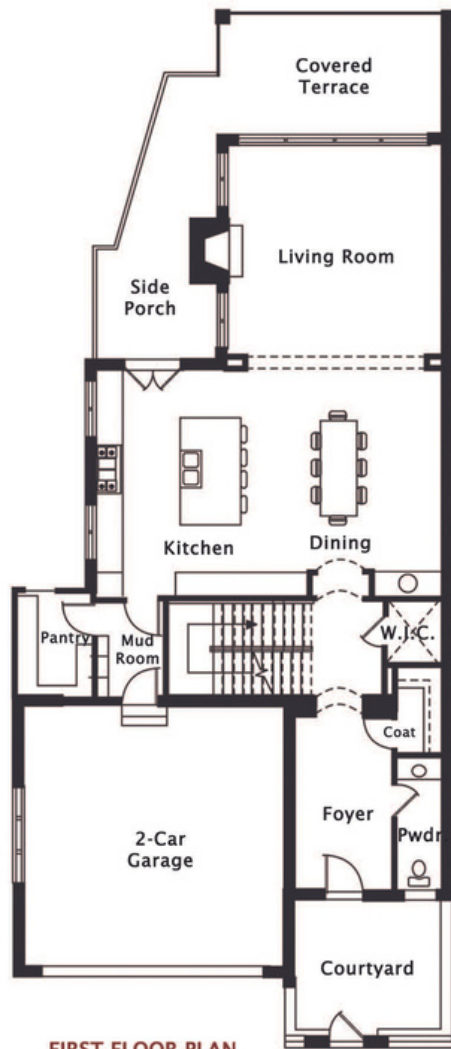


[WWW.GRANDFATHERHOMES.COM/CLAIRCROSS](http://WWW.GRANDFATHERHOMES.COM/CLAIRCROSS)

980.219.7480 • [INFO@GRANDFATHERHOMES.COM](mailto:INFO@GRANDFATHERHOMES.COM) • [@GRANDFATHERHOMES](https://www.instagram.com/GRANDFATHERHOMES)

# BIBURY DUET - MONTCLAIR

4 BEDROOMS | 4.1 BATHS • 4,265 HSF





## LUXURY DESIGN

- California-inspired architecture with stucco veneer, fiber cement accents, and custom steel entry door
- Material and color selections by Tammy Coulter Design: unique stain/paint colors, premium tile, hard-surface counters, designer fixtures/accessories
- Open floor plan with tall ceilings and modern trim
- Site-finished, white oak hardwood flooring
- Soft-close cabinetry throughout
- Tankless water heater
- Lush landscaping package
- Attached 2-car garage
- Wrap-around covered terrace on main level
- Covered terrace off recreation room



## GOURMET KITCHEN

- Thermador appliance package includes 48" gas range, cabinet paneled refrigerator and freezer columns, dishwasher, and microwave drawer
- Large island with breakfast bar
- Custom plaster hood crafted by local artisan
- Cabinet to ceiling tile backsplash
- Walk-in pantry

## PRIMARY RETREAT

- Primary bedroom with vaulted ceiling
- Private 5-piece bathroom: dual vanities, soaking tub, zero-entry tile shower and water closet
- Large walk-in closet

## SMART HOME TECHNOLOGY

- House audio pre-wire with Klipsch in-ceiling speakers in four locations
- Cat6 wiring at all TV locations: typically living room, covered terrace, office and all bedrooms
- 5.1 Home Theater pre-wire for surround sound in recreation room
- Keypad pre-wire and siren for security system
- Designated AV closet
- UniFi access points pre-wire as needed for long range for whole-home WiFi coverage



Elevations and renderings are artists' conceptions. Grandfather Homes reserves the right to make changes which are substantially equivalent to the above list. Features subject to change without notice.













# COMMUNITY

This prestigious new development spans across 8 1/2 acres behind Trinity Presbyterian Church off Providence Road. It's the intersection of 5 neighborhoods that have built Charlotte's heritage: Cotswold, Providence Park, Foxcroft, South Park and Myers Park.

Clair:

Meaning – Clear

Derived from the adjoining street, montclair.

Cross:

Inspired by the church.

Symbolic of the neighborhood interchange.

ClairCross:

A unique village of custom-built homes, adjoining Charlotte's heritage with progressive design.

**A custom home is the intersection of a long-held dream. ClairCross affords homeowners with the unique position to design a personal retreat. We will sit down with you and extract your vision to enable our team of designers and builders to actualize your dream from concept to reality.**

**LEARN MORE:**

**[WWW.GRANDFATHERHOMES.COM/CLAIRCROSS](http://WWW.GRANDFATHERHOMES.COM/CLAIRCROSS)**

## ABOUT US

Grandfather Homes is a Charlotte-based home builder offering premiere custom homes. Our greatest assets are our exemplary level of craftsmanship, our unwavering dedication to building your perfect home, and the depth of experience that our employees bring to each project. We pride ourselves on integrity, close attention to detail, and honesty at each step of the process. We take the time to understand what you envision in your perfect home – and then we will bring your dreams to life.

980.219.7480

@GRANDFATHERHOMES

INFO@GRANDFATHERHOMES.COM

WWW.GRANDFATHERHOMES.COM