

18000 WHISPERING OAKS

CORNELIUS, NC 28031 • MLS #4002519



WWW.GRANDFATHERHOMES.COM/WHISPERING-OAKS

980.219.7480 • INFO@GRANDFATHERHOMES.COM • [@GRANDFATHERHOMES](https://www.instagram.com/GRANDFATHERHOMES)

LUXURY DESIGN

- Coastal California architecture by JJ Barja and Elite Design Group with concrete roof, brick, precast stucco, and shiplap veneers.
- Expansive, strategic windows and doors with multiple panes of exposure
- Customizable interior design: stain and paint colors, tile, lighting, hard-surface counters, fixtures and accessories
- Contemporary yet gracious wood trim package
- Sunken greenhouse leads to chill room with pool bathroom, wet bar, and billiards
- Attached 6-car garages with center glass show bays
- Attached guest cottage with dedicated entrance
- Hardscaping and landscaping by landscape architect
- Exquisite outdoor living package with poolscape, dock, and grandfathered beach with shoreline boardwalk



GOURMET KITCHEN

- Wolf 48" dual fuel range and microwave drawer
- Subzero refrigeration and freezer columns
- Full scullery with Subzero refrigerator/freezer plus second Asko dishwasher
- Built-in banquet seating at breakfast room
- Custom range hood crafted by local artisan
- Locally made custom cabinetry
- Guest retreat features Bosch refrigerator/freezer plus Asko dishwasher

PRIMARY RETREAT

- Main level primary bedroom retreat
- Spa-like 5-piece bathroom with dual vanities, soaking tub, tile shower, and water closet
- Spacious walk-in closet with island

SMART HOME TECHNOLOGY

- Control4 lighting in first floor main areas and second floor hallways
- Dimmers in all main rooms
- Ultimate security system prewire
- 1 coax and 2 Cat6 drops to all TV locations
- Multiple and overlapping WiFi expanders
- Prewire all main rooms for in-ceiling speakers
- Dedicated media room with gaming bunk beds and 5.1 prewire for surround sound and theater system

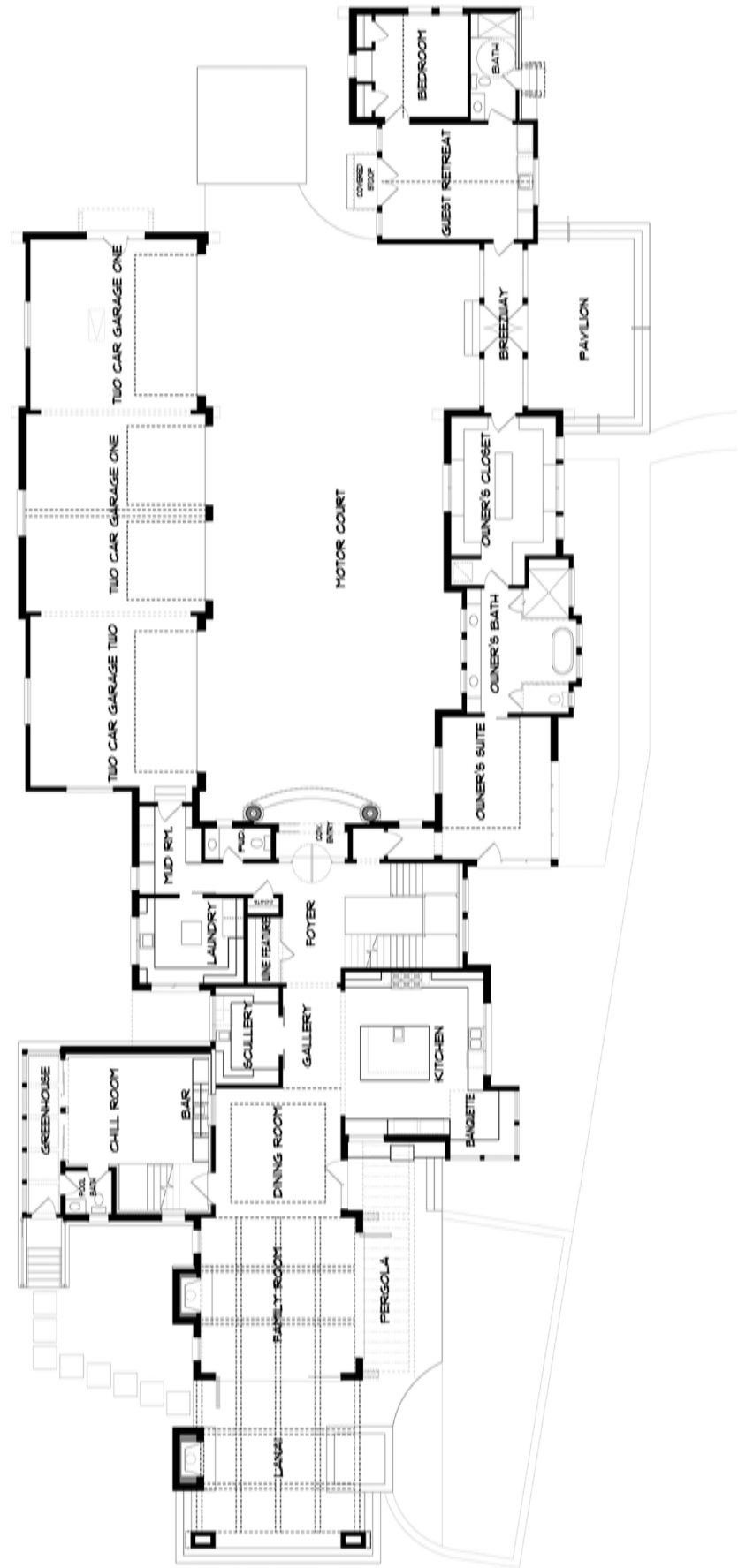


Elevations and renderings are artists' conceptions. Grandfather Homes reserves the right to make changes which are substantially equivalent to the above list. Features subject to change without notice.

18000 WHISPERING OAKS

5 BEDROOMS | 5.4 BATHS • 7,308 HSF

FIRST FLOOR
4,502 HSF

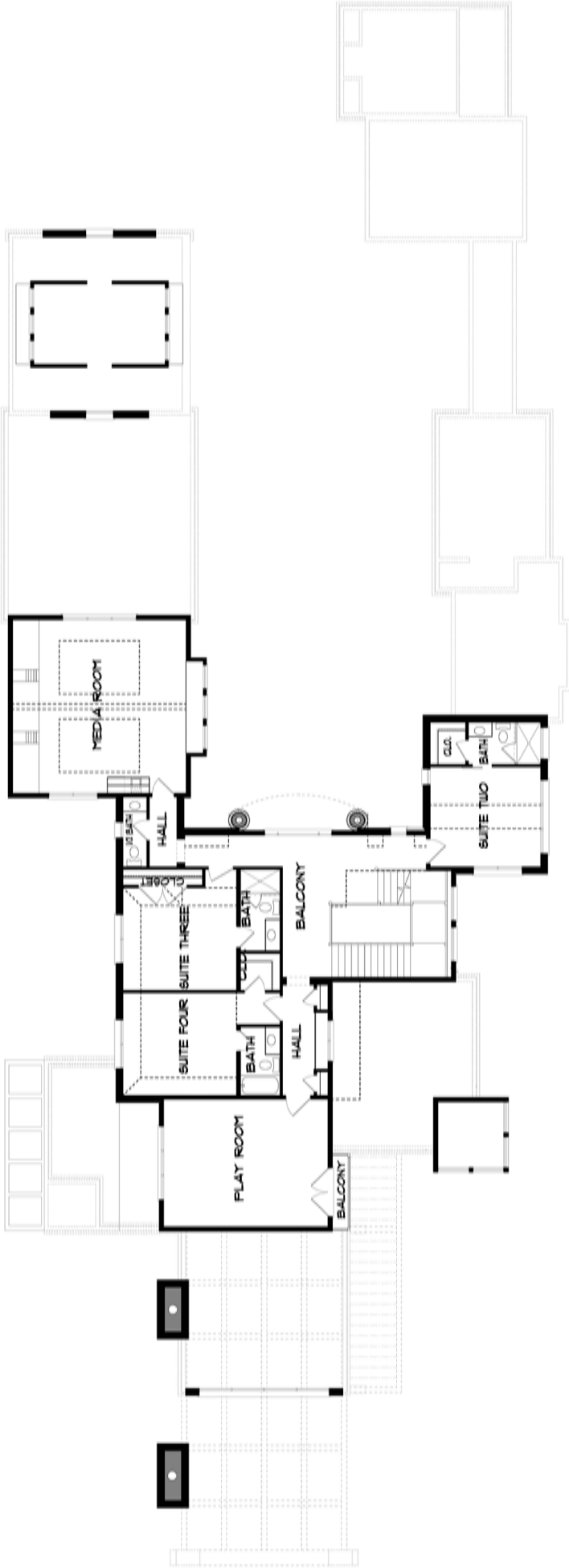


FLOOR PLANS AND ELEVATIONS ARE SUBJECT TO CHANGE. FLOOR PLAN DIMENSION ARE APPROXIMATE. CONSULT WORKING DRAWINGS FOR ACTUAL DIMENSIONS AND INFORMATION. ELEVATIONS ARE ARTISTS' CONCEPTIONS.

18000 WHISPERING OAKS

5 BEDROOMS | 5.4 BATHS • 7,308 HSF

SECOND FLOOR
2,446 HSF

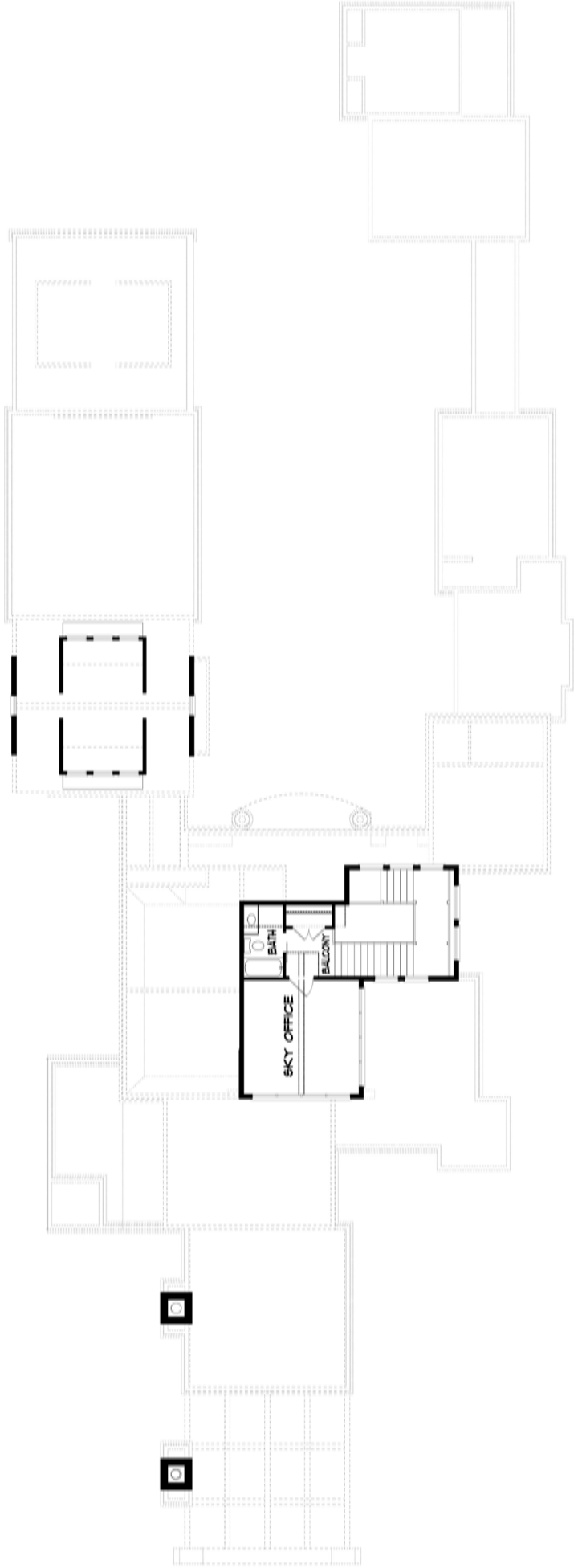


FLOOR PLANS AND ELEVATIONS ARE SUBJECT TO CHANGE. FLOOR PLAN DIMENSION ARE APPROXIMATE. CONSULT WORKING DRAWINGS FOR ACTUAL DIMENSIONS AND INFORMATION. ELEVATIONS ARE ARTISTS' CONCEPTIONS.

18000 WHISPERING OAKS

5 BEDROOMS | 5.4 BATHS • 7,308 HSF

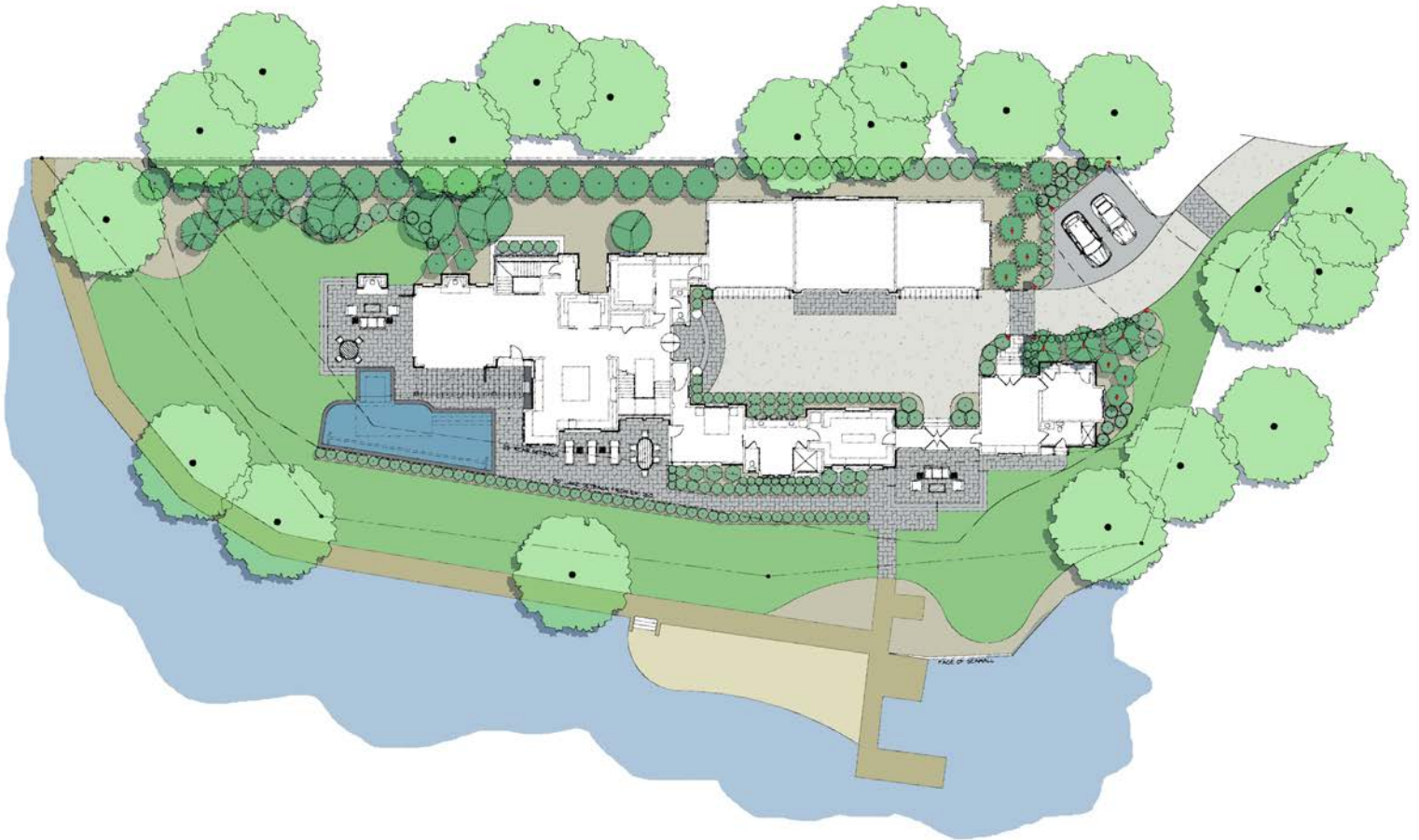
SKY OFFICE
360 HSF







LANDSCAPE DESIGN



LANDSCAPING PLAN IS SUBJECT TO CHANGE. CONSULT WORKING DRAWINGS FOR ACTUAL DIMENSIONS AND INFORMATION. ELEVATIONS ARE ARTISTS' CONCEPTIONS.

ABOUT US

Grandfather Homes is a Charlotte-based home builder offering premiere custom homes. Our greatest assets are our exemplary level of craftsmanship, our unwavering dedication to building your perfect home, and the depth of experience that our employees bring to each project. We pride ourselves on integrity, close attention to detail, and honesty at each step of the process. We take the time to understand what you envision in your perfect home – and then we will bring your dreams to life.

LEARN MORE:
WWW.GRANDFATHERHOMES.COM/

980.219.7480
@GRANDFATHERHOMES
INFO@GRANDFATHERHOMES.COM