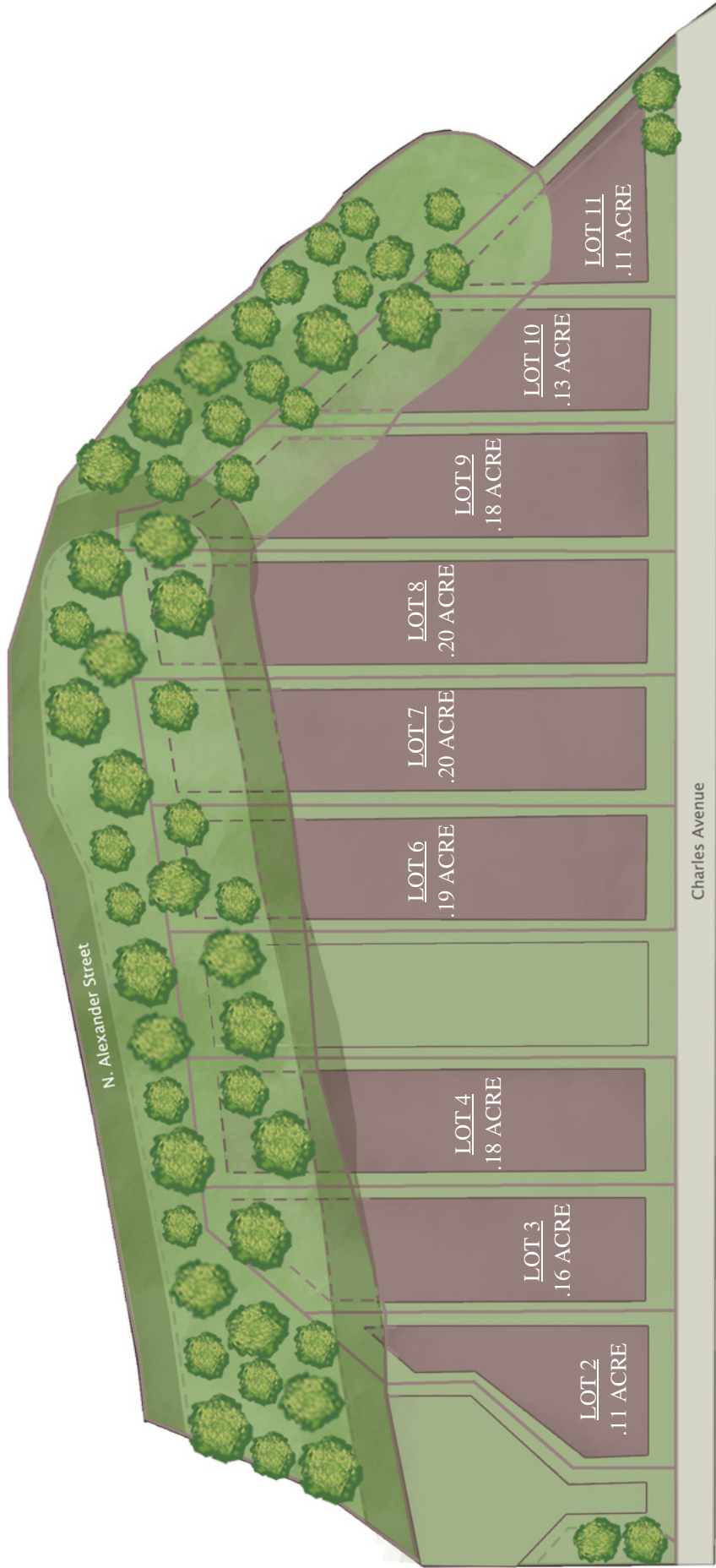


HEIRLOOM AT MATTIE ROSE

9 ARTFULLY DESIGNED HOMES ON CHARLES AVENUE



WWW.GRANDFATHERHOMES.COM

980.219.7480 • INFO@GRANDFATHERHOMES.COM • [@GRANDFATHERHOMES](https://twitter.com/GRANDFATHERHOMES)



COMMUNITY

Standing on Charles Avenue over one hundred and twenty years ago, Charlotteans were surrounded by rolling farmland. A group of investors in early 1903 transformed the surrounding acres into Charlotte's first textile mill, Highland Park Manufacturing. Stuart Cramer designed the state-of-the-art mill along with the surrounding village of homes and a future village square.

Today, Charles Avenue is a pedestrian-friendly street idyllically located near restaurants and shopping on bustling North Davidson. Nine lots remain incredibly untouched and undeveloped. Our vision is to honor the modest history of the mill district while in tandem introducing radical new concepts like Cramer did all those years ago.

Heir: inheriting and continuing the legacy of a predecessor

Loom: an apparatus for making textiles by weaving thread together

Heirloom: something of special value handed down from one generation to another

Heirloom is an artfully designed village of custom homes that began with a textile mill. Fast forward 120 years, Grandfather Homes is weaving together its heritage with progressive design. Let's build upon Charlotte's history together.

LEARN MORE: WWW.GRANDFATHERHOMES.COM

ABOUT US

Grandfather Homes is a Charlotte-based home builder offering premiere custom homes. Our greatest assets are our exemplary level of craftsmanship, our unwavering dedication to building your perfect home, and the depth of experience that our employees bring to each project. We pride ourselves on integrity, close attention to detail, and honesty at each step of the process. We take the time to understand what you envision in your perfect home – and then we will bring your dreams to life.

980.219.7480

@GRANDFATHERHOMES

INFO@GRANDFATHERHOMES.COM

WWW.GRANDFATHERHOMES.COM