



THE MANORS AT MATTIE ROSE

A GATED COMMUNITY OF 8 CUSTOM RESIDENCES



WWW.GRANDFATHERHOMES.COM/THE-MANORS

980.219.7480 • INFO@GRANDFATHERHOMES.COM • [@GRANDFATHERHOMES](https://www.instagram.com/GRANDFATHERHOMES)

THE MANORS AT MATTIE ROSE

A GATED COMMUNITY OF 8 CUSTOM RESIDENCES



WWW.GRANDFATHERHOMES.COM/THE-MANORS

980.219.7480 • INFO@GRANDFATHERHOMES.COM • [@GRANDFATHERHOMES](https://www.instagram.com/GRANDFATHERHOMES)

LUXURY DESIGN

- Choose your plan or design a home with one of Grandfather Homes' recommended plan designers
- Personalized Interior Design: stain and paint colors, tile, lighting, hard-surface counters, unique fixtures and accessories
- Stately entryways with gas lanterns and autocourt
- Harmonious hardscaping and landscaping
- Seamless indoor/outdoor living: options for spa, poolscape, pool cabana, fireplace/firepit and more
- Sealed or vented crawlspace foundation options
- Attached or detached, 3 or 4-car garage options
- 30-year architectural or permanent roof options
- Soaring 10' to 12'+ main ceilings; 9' upstairs ceilings



GOURMET KITCHEN

- Custom cabinetry with soft close doors and drawers
- Dynamic under-cabinet lighting
- Custom hoods crafted by local artisan
- Unique backsplash in tile, marble, or quartz
- Thermador appliance packages with upgrade options
- Large island, walk-in pantry and scullery options available per plan

PRIMARY RETREAT

- Spacious primary bedroom with walk-in closet
- Grandfather Homes' signature 5-piece bathroom: dual vanities, soaking tub, tile shower and water closet

SMART HOME TECHNOLOGY

- Control4 lighting in first floor main areas and second floor hallways
- Dimmers in living areas, kitchen, dining, and primary bedroom
- Security system prewire: 3 doors, 2 keypads, 2 motion, 4 Cat6 camera drops
- 1 coax and 2 Cat6 drops to all TV locations
- 4 WiFi hot spot prewire
- 4 in-ceiling speaker pairs (8 speakers total) and 4 additional speaker pre-wire locations
- 5.1 prewire in bonus room for surround sound



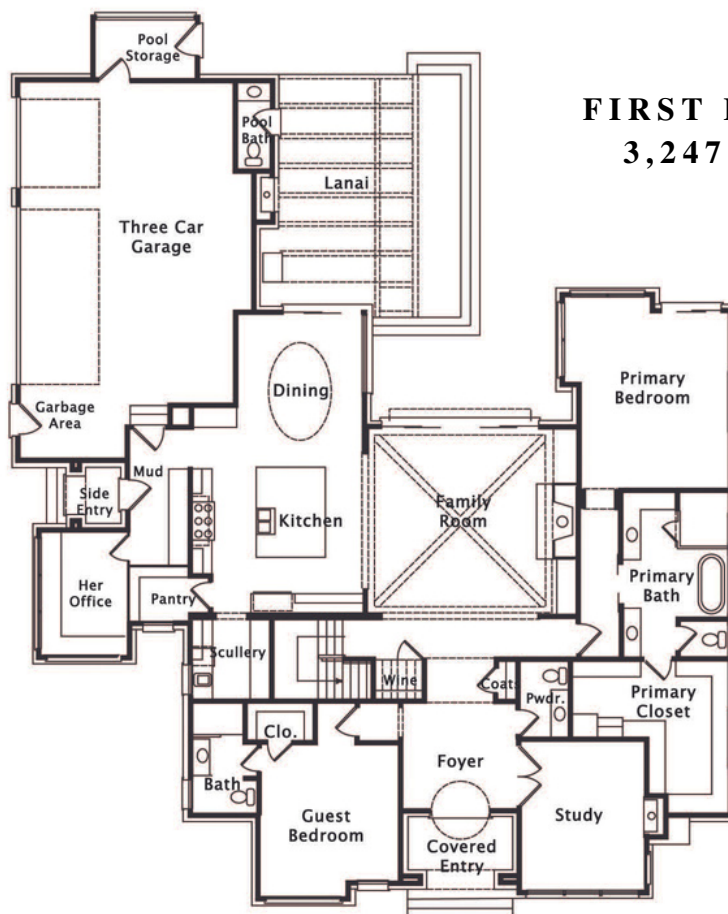
Elevations, and renderings are artists' conceptions. Grandfather Homes reserves the right to make changes which are substantially equivalent to the above list. Features subject to change without notice.



VALENCIA MANOR

UNDER CONSTRUCTION ON LOT 2

5 BEDROOMS | 5.2 BATHS • 6,280 HSF



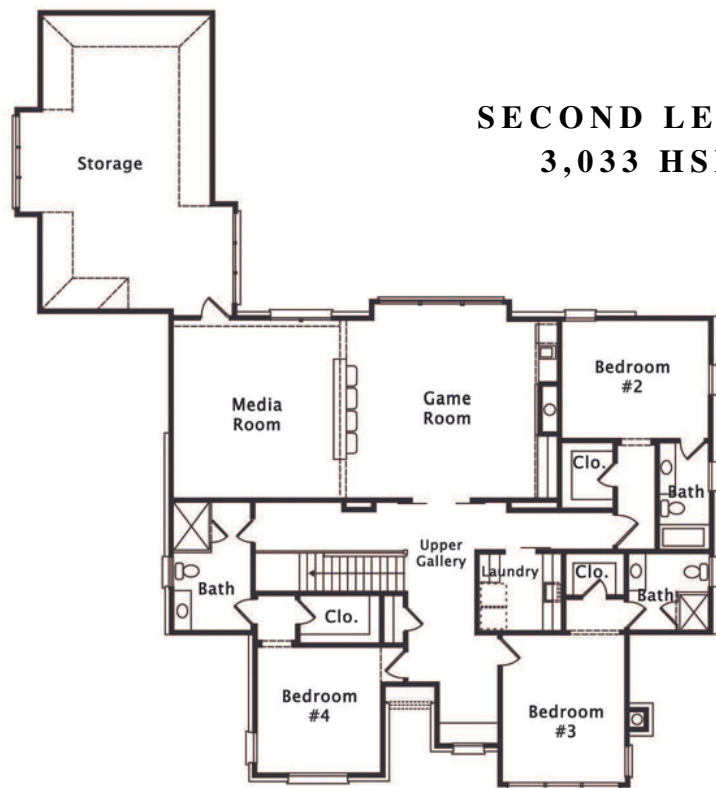
FIRST LEVEL
3,247 HSF



VALENCIA MANOR

UNDER CONSTRUCTION ON LOT 2

5 BEDROOMS | 5.2 BATHS • 6,280 HSF



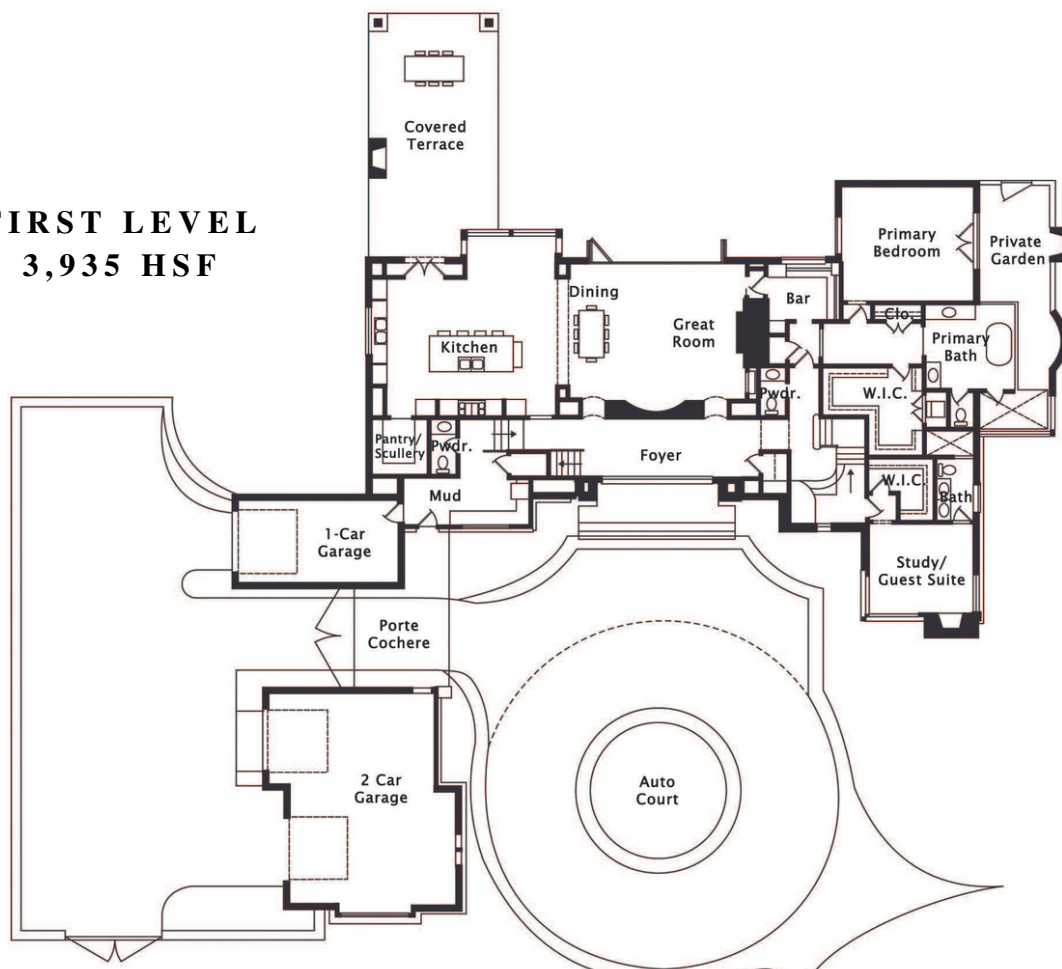


THREE GABLE ENGLISH MANOR

CUSTOM BUILD INSPIRATION

5 BEDROOMS | 5.2 BATHS • 6,155 HSF

FIRST LEVEL 3,935 HSF





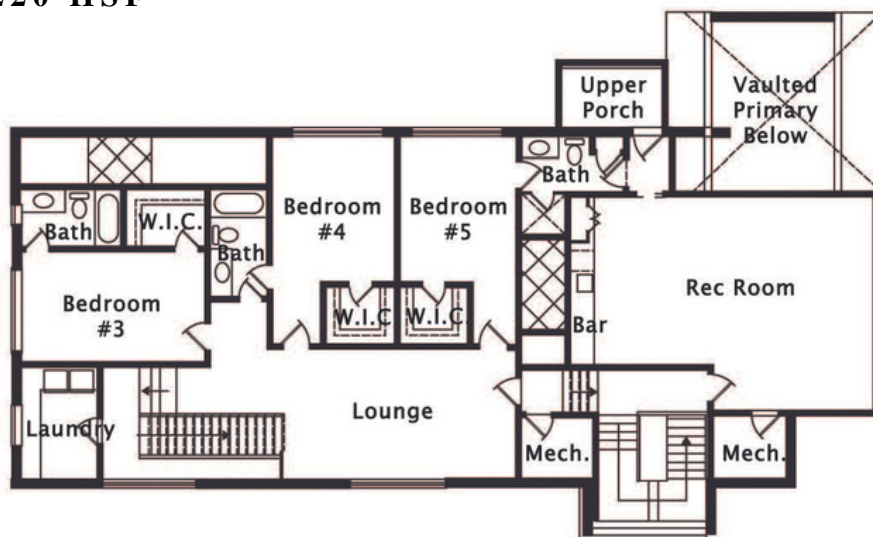
THREE GABLE ENGLISH MANOR

CUSTOM BUILD INSPIRATION

5 BEDROOMS | 5.2 BATHS • 6,155 HSF

SECOND LEVEL

2,220 HSF



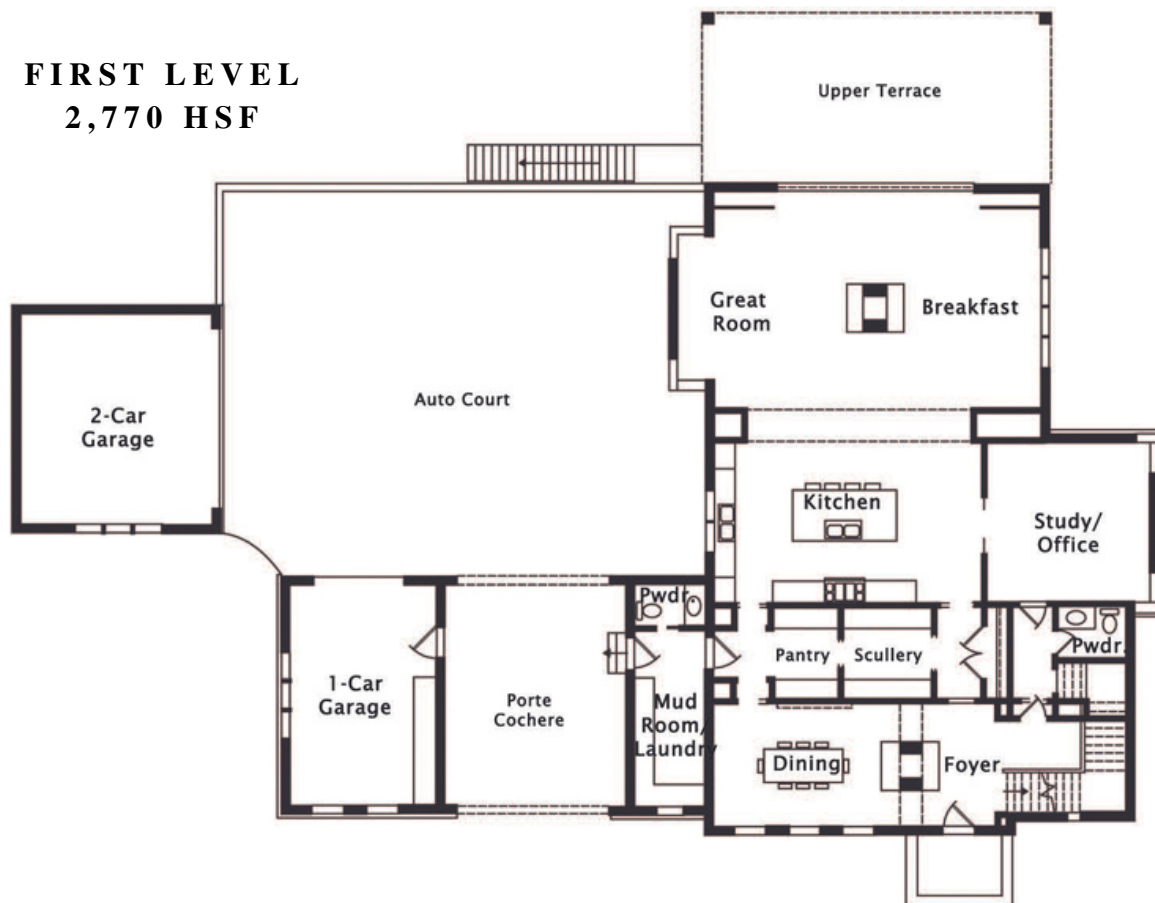


MODERN COLONIAL MANOR

CUSTOM BUILD INSPIRATION

4 BEDROOMS | 4.1 BATHS • 5,000 HSF

FIRST LEVEL 2,770 HSF



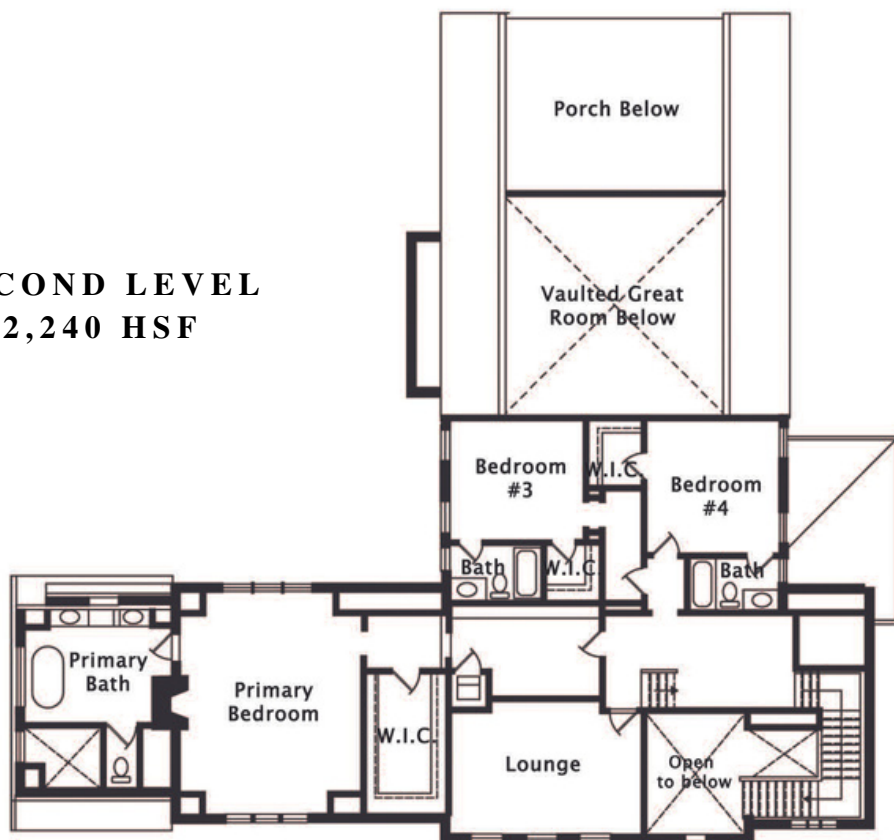


MODERN COLONIAL MANOR

CUSTOM BUILD INSPIRATION

4 BEDROOMS | 4.1 BATHS • 5,000 HSF

SECOND LEVEL 2,240 HSF





COMMUNITY

The Manors at Mattie Rose is an exclusive gated community that spans across 9 acres off Alexander Road in South Charlotte. Eight estate homesites measure around 1-acre each, creating a picturesque retreat just minutes from the excitement of the city.

Expect the best in modern living from custom architecture, designed to suit your every want and need. Each home features stunning craftsmanship and quality workmanship, impressing even the most well-traveled and discerning homeowner. Bryan Mermans, who has studied traditional manor European architecture dating back to the 1400s, is the recommended architect.

At Grandfather Homes, we honor that a custom home is the realization of a long-held dream. The Manors at Mattie Rose affords homeowners with the unique position to design estate residences alongside a team of respected designers. We will sit down with you and extract your vision to actualize your dream from concept to reality.

LEARN MORE:
WWW.GRANDFATHERHOMES.COM/THE-MANORS

ABOUT US

Grandfather Homes is a Charlotte-based home builder offering premiere custom homes. Our greatest assets are our exemplary level of craftsmanship, our unwavering dedication to building your perfect home, and the depth of experience that our employees bring to each project. We pride ourselves on integrity, close attention to detail, and honesty at each step of the process. We take the time to understand what you envision in your perfect home – and then we will bring your dreams to life.

980.219.7480
@GRANDFATHERHOMES
INFO@GRANDFATHERHOMES.COM
WWW.GRANDFATHERHOMES.COM